

MSc Mental Health: Transcultural Mental Healthcare/Psychological Therapies (Distance Learning)



Barts and The London
School of Medicine and Dentistry

**Centre for Psychiatry
Wolfson Institute of
Preventive Medicine**

MSC Mental Health: Distance Learning

Introduction

The Distance Learning MSc programme in Mental Health includes three modules, each lasting 12 weeks, and each with 12 core teaching and learning days. The choice of modules determines which pathway is followed:

- **Module 1:** Mental Health Assessment
- **Module 2 — either:** Transcultural Mental Healthcare or Psychological Therapies
- **Module 3:** Research Methods

The above are complemented by half day clinical placements for Modules 1 and 2 to develop better practices in real clinical settings. You will prepare a report on these placements as part of the online in-course assessment for Modules 1 and 2. There are also Problem Based Learning (PBL) sessions (one a week), and you will need to make time to read two key references each week and provide a précis for the online PBL tutorials. You will also need private study time for reading and searching out relevant new material. There is also a research or literature review plan to be prepared for Module 1, and a pilot study in Module 2, followed by a thesis (research or literature review) for Module 3. There are additional online research tutorials which are intended to support students submitting research dissertations. Full-time students will complete the three modules over one year, while part-time students take two years.



Course Delivery

WebCT is a virtual learning environment (VLE) used as part of this Distance Learning Programme. Students will have access to WebCT once fully enrolled onto the programme. Course information and all teaching materials will be disseminated through WebCT. Lectures will be recorded as video and audio, and then uploaded, and all teaching, learning and assessment will take place via WebCT. Communications with students and tutors will be mainly via WebCT emails, virtual classrooms and online discussion board. Online PBL and research tutorials will be conducted by Queen Mary teaching staff, or by associated tutors.

The current WebCT features for each module include:



- | | |
|---|---|
| <ul style="list-style-type: none">• Course Syllabus• Tools for Lecture Materials• Tools for PBL Materials• Tools for submitting assignments• WebCT email• Virtual Discussion | <ul style="list-style-type: none">• Virtual Classrooms (synchronous)• E-calendar• Tools for student feedback• Tools for students to track results/progress• E-noticeboard |
|---|---|

MSC Mental Health: Distance Learning

Courses

We offer full-time and part-time distance learning postgraduate programmes leading to MSc and Diploma:

MSc

- Full time: all three modules are completed in one year
- Part time: the first two modules are completed in year one, with the third (research module) being completed in year two. This offers the option of undertaking a more protracted piece of research which requires a longer period of time to complete it.



Diploma

- Full time: both modules are completed in year one
- Part time: one module is completed each year. This pathway, although possible, is inadvisable as it will fragment the period of learning and requires more complex arrangements for students. However, where it is the only way a student can undertake a course, and the student has the aptitude to succeed under these difficult circumstances, this option will be considered.

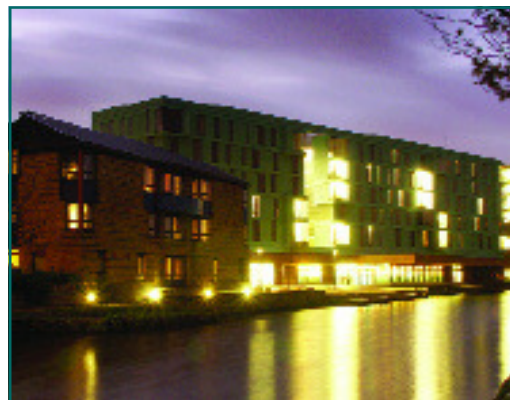
Weekly Module Content

In Modules 1 and 2 the weekly content consists of:

- One to two hours recorded lectures
- Six hours group work
- One hour tutorial
- Four hours online peer presentations
- Four hours placement
- Eight hours self-determined research day
- Sixteen hours private study time/project work

In Module 3 the weekly content consists of:

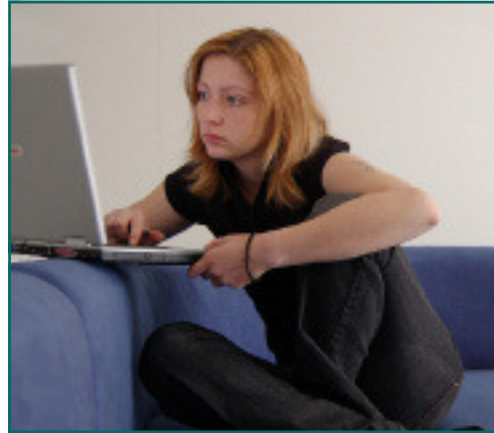
- Seven weeks of four hours recorded lectures
- One hour a week tutorial
- Remainder of time for dissertation work



Teaching and Learning Strategies

The following methods will be employed:

- Each week you will access teaching materials, including one to two hours recorded lectures via the WebCT system. This will be followed by online group discussions of organizational and individual patient management problems via WebCT
- PBL is used extensively in the early stages of the Distance Learning course, and both clinical and non-clinical scenarios will be set and discussed.
- In addition, you will receive extra online research tutorials on a fortnightly basis. Specific problems of research will be set as a research brief for students to address during the online research sessions. These online PBL sessions and research tutorials will address critical appraisal, qualitative and quantitative methods, writing skills, writing a paper, and grant applications. The research tutorials and PBL sessions will be facilitated by Queen Mary staff (and associated tutors in the case of collaborative institutions)
- Students will also be allocated particular topics/service models for Module 2, which you will research and present to each other to develop your presentation and peer-review skills. This approach will encourage a culture of interdisciplinary and collaborative work.
- Moreover, each student is required to identify a work setting in which they spend a day doing a placement with a mental health service. You will provide an online written report of your placement work. This will encourage independent learning skills and community liaison skills.



Assessment

The Distance Learning MSc programme uses a variety of assessment strategies:



Module 1: practice placement plan, research or literature review plan, PBL write ups, oral and written examination

Module 2: practice placement report, pilot study report for the main study, student presentation, PBL write ups and oral and written examination.

Module 3: PBL write ups and attendance, grant writing report, Dissertation (10-15,000 words), supporting publications and written examination

/continued overleaf...

MSC Mental Health: Distance Learning

Assessment

The marks for each module are allocated as follows:

Module 1	
Research Plan	15 per cent
Preparatory placement report (1)	10 per cent
PBL write ups	15 per cent
Written examination	40 per cent
Oral examination	20 per cent
Module 2	
PBL write ups	10 per cent
Practice placement report (2)	10 per cent
Pilot study	10 per cent
Student Presentation	10 per cent
Written examination	40 per cent
Oral examination	20 per cent
Module 3	
Writing a grant proposal	10 per cent
Written examination	30 per cent
Thesis	60 per cent

The written examinations will be held at the end of each academic year. Furthermore:

- Final written end-of-year examinations will be administered through the British Council
- Oral examination will be delivered via webcam or similar technology
- PBL and module assignments will be submitted and marked through WebCT
- Assignment results will be published on WebCT
- Assessment feedback will be compiled and sent back via WebCT



Student Support

- There will be a monthly online student-staff meeting to address issues arising from programme delivery.
- We will establish a student-staff liaison discussion group operated through WebCT or similar technology, convening once a term.
- A student representative will act as a communication and liaison point for programme review and development and participation in liaison meetings.
- The management of appeals and academic misconduct allegations, for example allegations of plagiarism and compliance with any other assessment regulations, shall take place in accordance with Queen Mary policy
- The Programme Director will be the first point of contact for pastoral support
- Complaints about the course or the MSc tutors for example, should be made to the Programme Director.



System Requirements

WebCT course sites will function best if a computer with the following specifications is used. You may access WebCT sites with computers that do not meet these minimum specs, but some problems may occur.

	For PC	For MAC
Operating System	<ul style="list-style-type: none"> • Windows: Windows 98, 2000, XP or Vista • Minimum system requirement: CPU (Chip) Pentium III 300 MHz, Memory 128MB RAM or more, broadband 	<ul style="list-style-type: none"> • Macintosh: OS.9.x or MacOS X (10.1 or higher) • Minimum system requirement: CPU G3 or higher, Memory 128 MB RAM or more, broadband
Browsers	<ul style="list-style-type: none"> • Netscape Navigator version 6.2.x or 7.0 or 7.1 (earlier versions are not supported) • AOL version 7.0, 8.0, 9.0 (earlier versions are not supported) • Mozilla version 1.5, 1.6 • Firefox version 1.0 • Microsoft IE 5.0, 5.5, 6.0 (versions 4.0 and 5.5 SP1 are not supported) 	<ul style="list-style-type: none"> • Netscape Navigator version 6.2.x (earlier versions are not supported) • AOL for OS X • Mozilla 1.5 and 1.6 • Safari 1.2 browser (for OS 10.3 only) • IE version 5.2 or higher (IE 5.2 for OS X 10.2)
Accessories	<ul style="list-style-type: none"> • Webcam • Headphones and speaker 	<ul style="list-style-type: none"> • Webcam • Headphones and speaker

www.mentalhealthcaredegrees.com

For further information contact:

**Centre for Psychiatry
Old Anatomy Building
Wolfson Institute of Preventive Medicine
Barts and the London
Queen Mary's School of Medicine and Dentistry
Charterhouse Square
London EC1M 6BQ
Tel: +44(0)20 7882 2013
Fax: +44 (0)20 7882 5728
Email: tmh-admin@qmul.ac.uk**



share knowledge change lives

www.careif.org